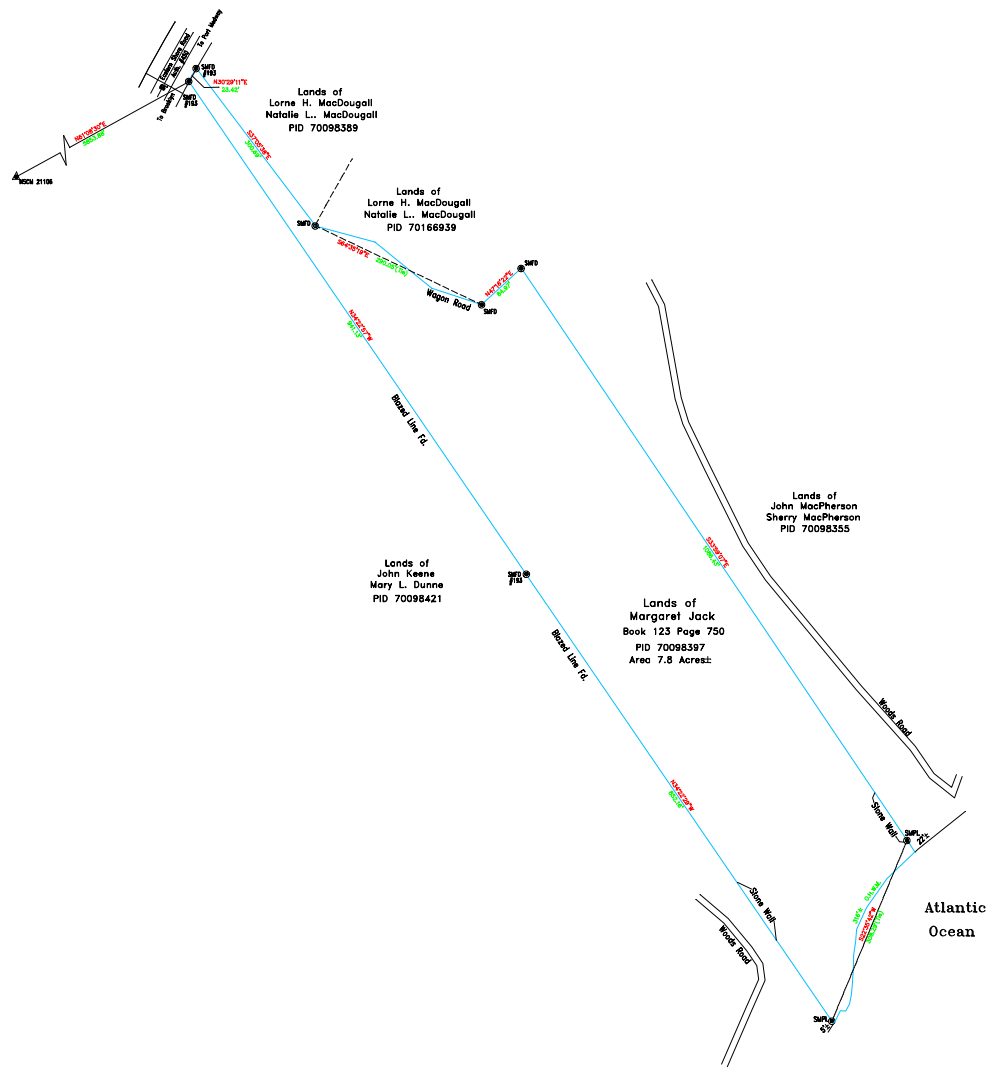


Central Meridian 64°-30' W



KEY PLAN 1:50000

Plans Used

- Plan 4038 April-July 1971 by R.L. Hunt/MSLS
- Plan C-775 Sept. 05, 1998 by R.L. Hunt/MSLS

NOTES

- Surveys were carried out during the period of June - August, 2012
- All bearings and distances are unadjusted.
- All bearings are grid S.M.T.M. Ck. 64°-30' West
Longitude Zone 5, adjustment July 1, 1979.
- All lines shown as surveyed were blazed at the time of the survey.

LEGEND

- Lands dealt with by this plan
- Common boundary line as per provincial subdivision regulations.
- Adjoining boundary line
- SM (Survey Marker) Iron bar with aluminium cap
- ⊙ I.B. Iron bar
- Calculated Point
- TP. Traverse Point
- ⊙ P.&S. Post & Stones
- ▲ N.S.C.M. Nova Scotia Coordinate Monument
- Fd Found
- Pt Placed
- O.H.W.M. Ordinary High Water Mark
- ⊕ Cut Cross
- P.I.D. Parcel Identification Number



I, MARK J. WHITTON, Nova Scotia Land Surveyor, hereby certify that the survey represented by this plan was conducted under my supervision, and that the survey and plan were made in accordance with the Nova Scotia Land Surveyors Act and the regulations made thereunder.

Dated this day of 2012.
N.S.L.S.

GEOMAP
Surveying & Engineering Inc.
P.O. Box 114 Liverpool, Queens Co., Nova Scotia
Phone: 902-354-5182
Fax: 902-354-3949
BOT TKO

PLAN OF SURVEY SHOWING
LANDS OF
MARGARET L. JACK

LOCATION: EASTERN SHORE ROAD, BEACH MEADOWS, QUEENS COUNTY
PLOTTED BY: P.D. MEHLMAN-SHAND DRAWN BY: PDMS JOB #600BF
SCALE: 1"=100' PLAN NO.
DRAWN: August 29, 2012 C-1247